



GAT MONTHLY MEMBERSHIP PROGRESS REPORT

Results as of: 5/31/2023

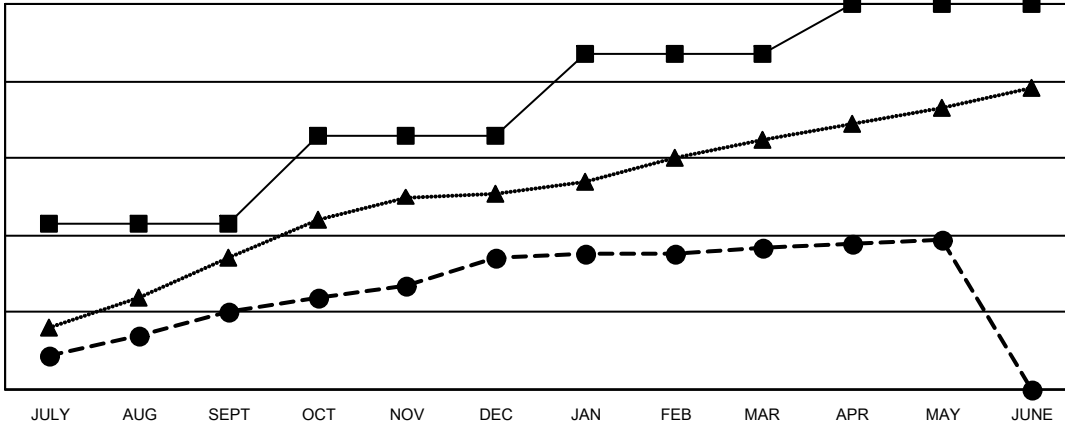
Multiple District 317

LOCATION: INDIA

Clubs			
RESULTS FOR 2022-2023			
QUARTER	NEW CLUB GOAL	NEW CLUBS	DROPPED CLUBS
JULY/AUG/SEPT	43	20	3
OCT/NOV/DEC	23	14	22
JAN/FEB/MAR	21	3	4
APR/MAY/JUNE	13	2	2

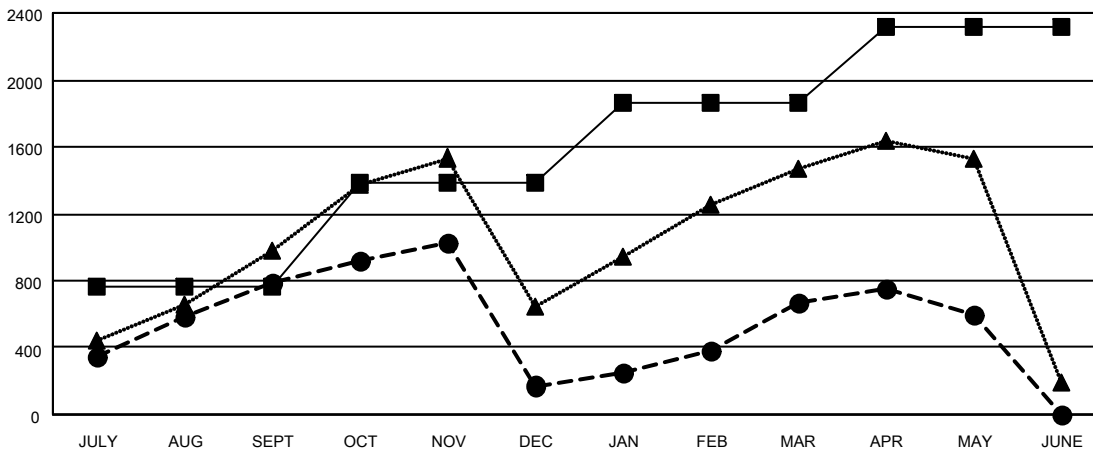
Members			
RESULTS FOR 2022-2023			
QUARTER	MEMBER GROWTH NET GOAL	MEMBER GROWTH ACTUAL	DROPPED MEMBERS ACTUAL (including transfers)
JULY/AUG/SEPT	765	1,240	405
OCT/NOV/DEC	616	812	1,366
JAN/FEB/MAR	477	832	314
APR/MAY/JUNE	463	355	413

GOALS AND ACTUAL NEW CLUBS CUMULATIVE



- CURRENT YEAR GOALS FOR NEW CLUBS
- CURRENT YEAR ACTUAL NEW CLUBS
- ▲- LAST YEAR ACTUAL NEW CLUBS

GOALS AND ACTUAL MEMBERS CUMULATIVE



- MEMBER GROWTH NET GOAL
- MEMBER GROWTH ACTUAL
- ▲- LAST YEAR MEMBERSHIP ACTUAL

DROPPED CLUBS: 31	
DROPPED MEMBERS	
DECEASED	70
CLUB CANCELLED	791
OTHER	1,640
TOTAL	2,501

444 CLUBS OF 708 ADDED 1 OR MORE NEW MEMBERS

[CLICK HERE FOR CUMULATIVE MEMBERSHIP DATA](#)

GENDER DISTRIBUTION	
MALE	15,841 (73.69%)
FEMALE	5,655 (26.31%)
NON BINARY	0 (0.00%)
PREFER NOT TO ANSWER	1 (0.00%)
TOTAL FAMILY UNIT MEMBERS	7,937
FAMILY MEMBERS PAYING HALF DUES	4,347